



# SPXS32

DIESEL + ELECTRIC POWER UNIT



## REMOTE CONTROL



- ✓ Multifunctional
- ✓ Proportional
- ✓ LCD Screen
- ✓ Spare battery
- ✓ Alarm & error diagnostic

## HYDRAULIC JIB

- ✓ Hook or winch mode
- ✓ 1 ton MAX capacity
- ✓ 17,3 m MAX height
- ✓ Stored on board & easy to install



## SPECIAL FEATURES

- ✓ 400 kg Pick&Carry
- ✓ Virtual Walls
- ✓ Self-diagnostic system
- ✓ All accessories on board
- ✓ Variable displacement pump

## WINCH



- ✓ 800 kg single line
- ✓ Up to 125 m rope
- ✓ Up to 4 falls
- ✓ Pulley heads and pulley block on board

## MAIN BOOM

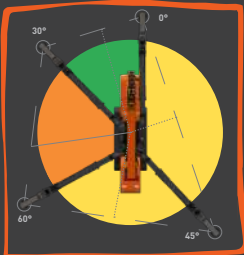


- ✓ 3,2 tons MAX capacity
- ✓ 12,1 m MAX height
- ✓ 4 hydraulic extensions by chain
- ✓ High-resistance steel
- ✓ Hook & winch mode

## 360° ENDLESS ROTATION

## OUTRIGGERS

- ✓ 1250 different configurations
- ✓ 4 independent stability areas
- ✓ Self-levelling system



## ADDITIONAL ELECTRIC POWER UNIT



- ✓ On board
- ✓ 50 Hz or 60 Hz
- ✓ Simple switch from diesel
- ✓ 220 V or 400 V

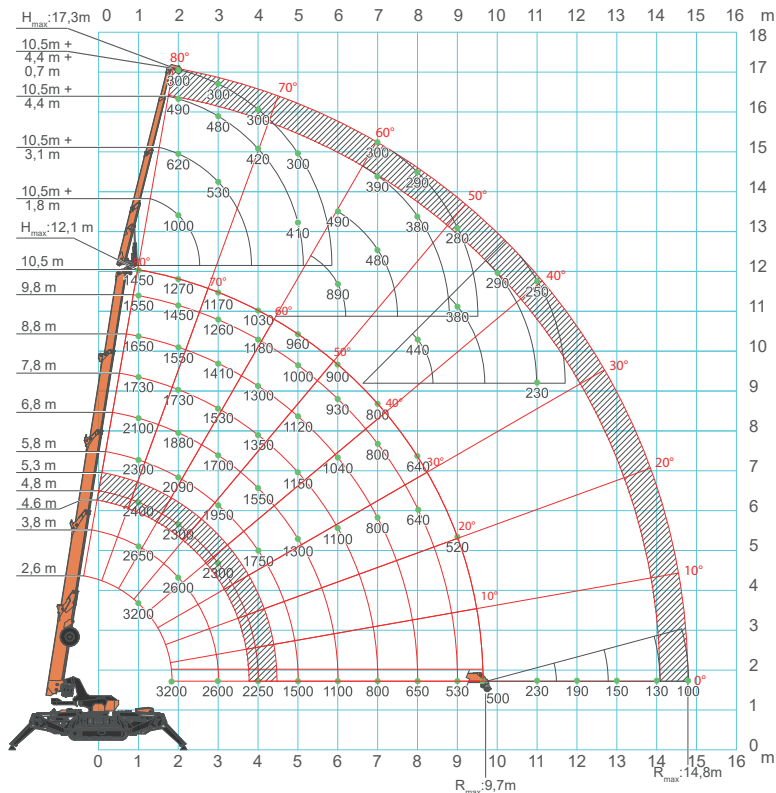
## TRACKS

- ✓ White or black tracks
- ✓ 45° hydraulically extendible

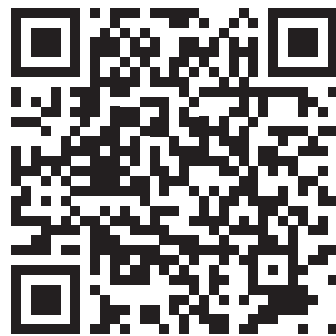




## LOAD CHART



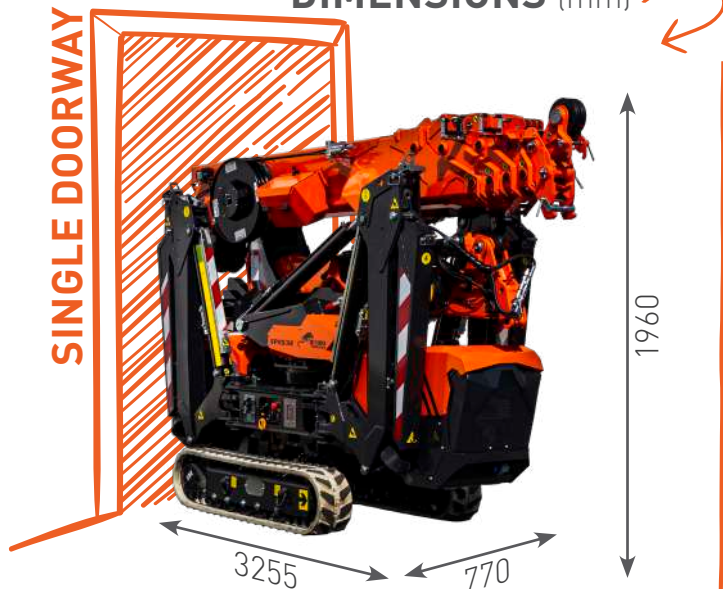
SCAN FOR MORE TECHNICAL DATA



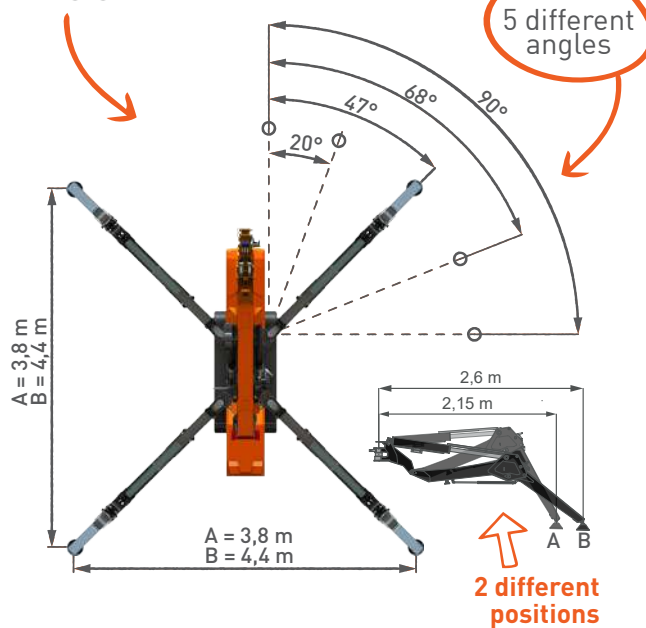
	Kg
SPX532	2520
Hydraulic Jib	210
Winch	52
Electric Power Unit	63



## DIMENSIONS (mm)



## FOOTPRINT

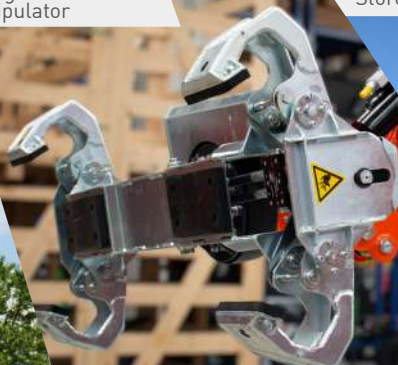


## ACCESSORIES

**JVM800-R**  
800 kg glass manipulator



**JIB500GR**  
500 kg steel beam manipulator



**1,2 ton RUNNER JIB**  
Stored on board



**1 ton Hydraulic JIB**  
Stored on board

